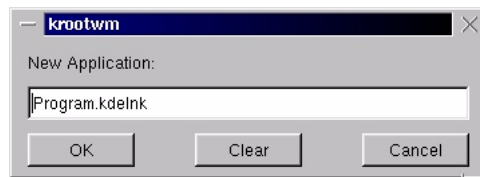


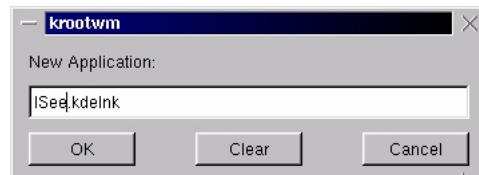


Creating Icon Links for ISee Imaging Software

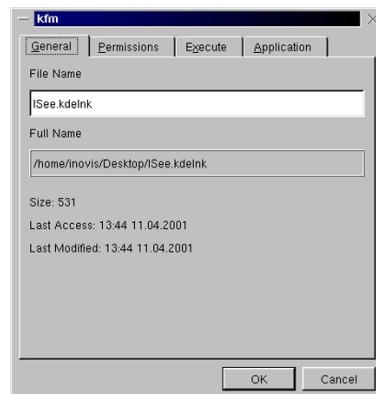
1. Place the mouse pointer in the main screen and hold down the right mouse key. A Function Window will appear.
2. Select - **New**.
3. A second Function Window will appear. Select - **Application**. The **KROOTWN** screen will appear.



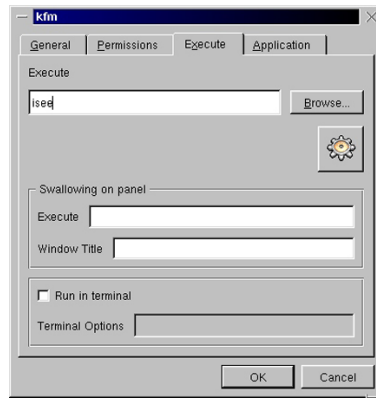
4. Replace **Program.kdeInk** with **ISee.kdeInk** .




5. Click on the **OK** button and the **KFM** screen will appear.

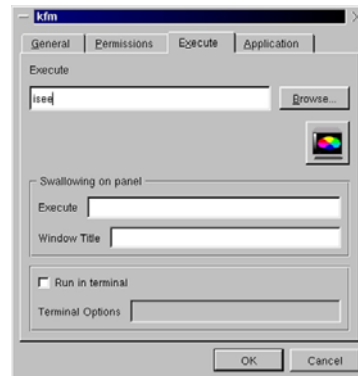
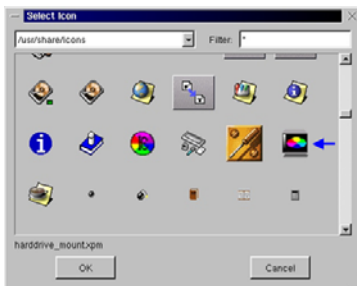


6. Select the **Execute** Function and the Execute Screen will appear. In the blank line beneath "Execute", type in - **isee** .



7. Click on  and the **Select Icon** Window will appear.

8. Scroll down to the ISee icon and click on it. The click on the **OK** button that the bottom of the Select Icon Screen. The ISee icon will now appear in the Execute Window.

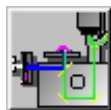


9. Click on the **OK** button at the bottom of the KFM screen and the ISee icon will now appear in on the main screen. To launch ISee, click once on the ISee icon.

10. Repeat this procedure that the ESee icon and the RatioTool Icon.

a. For ESee:

1. In the KFM Screen, replace Program.kdelnk with ESee.kdelnk
2. In the Execute Screen, type in - esee
3. Select the ESee icon



b. For Ratio Tool :

1. In the KFM Screen, replace Program.kdelnk with Ratio.kdelnk
2. In the Execute Screen, type in - r3
3. Select the Ratio Tool icon

