



## Getting Started with ISee Imaging Software

### Logging In and Starting ISee

A. Log into your account. The main desktop screen will appear.

B. At the bottom of the screen you will see the ISee icon.

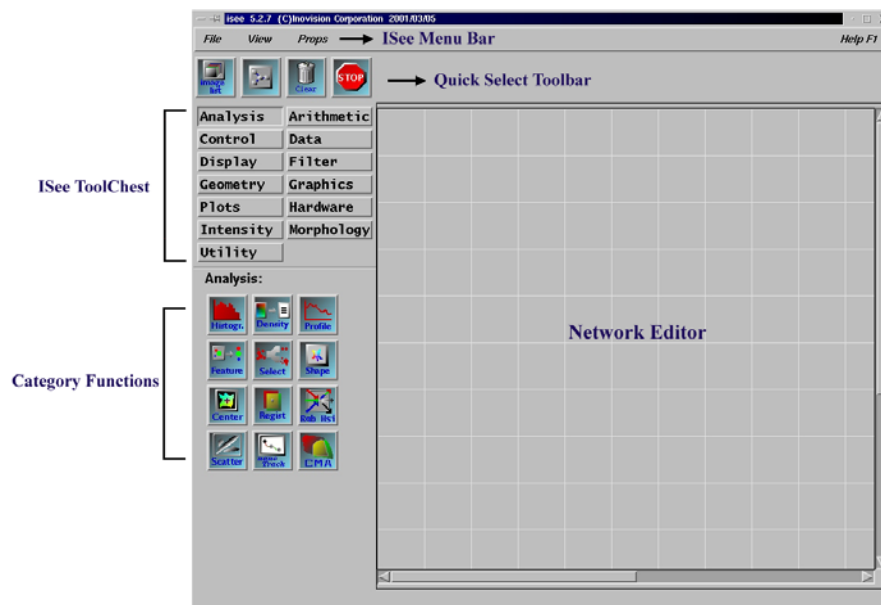


C. Click on the ISee icon and the ISee Main Screen will appear.

### Anatomy of the ISee Graphics Interface

A. The ISee Main Screen consists of 5 areas:

1. The Network Editor - where you will create imaging networks (macros)
2. The ISee ToolChest - which contains 13 imaging category buttons
3. The Category Functions - which contain the icons for the imaging functions
4. The Quick Select Toolbar - where the user can setup icons for most commonly used imaging routines.
5. ISee Menubar - which contains the File, View, and Props options.



## Anatomy of the ISee Graphical Interface

### B. ISee Menu Bar



1. File
  - a. Open Images - Displays the Image Database Screen
  - b. Open Networks - Displays the Network Database Screen
  - c. Create Directory - Allows the user to create directories
  - d. Exit - Closes the ISee program
2. View
  - a. View StageTool
3. Props
  - a. Optics - Displays the Optics Calibration Screen
  - b. Preferences - Displays the Preferences Setup Screen
  - c. Key Binding Editor - Allows the user to setup key binding functions
  - d. Memory/Disk Usage - Displays the memory/disk usage screen
  - e. Color Map - Allows the user to setup various color maps

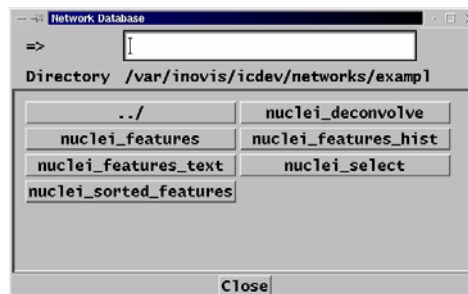
### C. Quick Select Toolbar



- The Image List Icon is used to access the Image Database



- The Network Icon is used to access the stored image networks



## Anatomy of the ISee Graphical Interface

### C. Quick Select Toolbar



- The Clear Editor Icon deletes icons and networks from the editor



- The Stop Icon stops all running networks

# Logging In and Starting ISee

## D. ISee Tool Chest

Analysis	Arithmetic
Control	Data
Display	Filter
Geometry	Graphics
Plots	Hardware
Intensity	Morphology
Utility	

The ISee Tool Chest includes thirteen categories of imaging functions. Under each category is a set of imaging functions that relates to that group's specific function.

To access the group's imaging function, place the mouse pointer over the category and click the left mouse key.

## E. ISee Imaging Functions

### Analysis

### Control

### Display

### Geometry

### Plots

### Intensity

### Utility

### Arithmetic

### Data

### Filter

### Graphics

### Morphology

## Anatomy of the ISee Graphical Interface

### E. ISee Imaging Functions

#### 1. Hardware Functions

- The hardware control icons, shown under the Hardware Category, allow the user to setup and control a wide array of imaging hardware that is connected to the computer.
- These devices include video and digital CCD cameras, filter wheels, motorized XY stages, Z focus attachments and a host of other devices.
- Icons in this category will only appear when the device is connected to the computer.

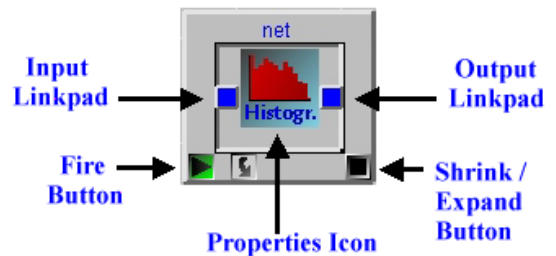


### F. Anatomy of a Pnode (Imaging Function)

- A Pnode is an imaging function icon that is linked to other pnodes to create an imaging network or visual scripting.

#### 2. Each pnode consists of:

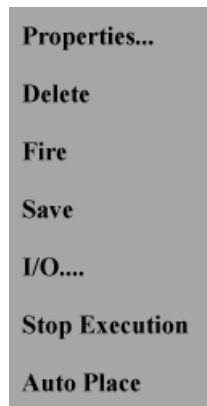
- Input Linkpads
- Output Linkpads
- Properties Icon
- Fire Button
- Expand / Shrink Network Button
- Do Not Know Button



#### 3. Pnode Pull Down Menu

- Each Pnode has a pull down menu that can be accessed by placing the mouse pointer over the Properties Icon and depressing and holding the right mouse key down.

- Properties - displays the icons property screen.
- Delete - deletes the icon from the network editor
- Fire - activates the image network
- Save - Saves the image network
- I/O.. - Opens the I/O setup screen
- Stop Execution - Stops the running network
- Auto Place - arranges the icons in a network



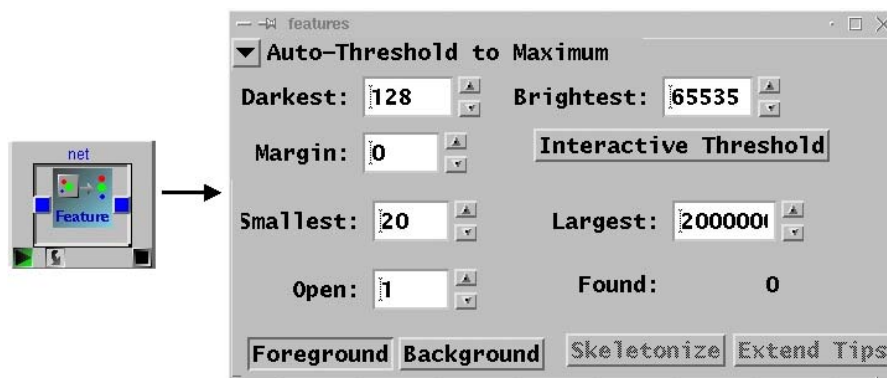
## Anatomy of the ISee Graphical Interface

### F. Moving Pnodes Into the Network Editor

1. Place the mouse pointer over the desire pnode in the Category Functions area.
2. Click the left mouse key once.
3. Move the mouse pointer in the Network Editor.
4. Click the left mouse key once.
5. The pnode will appear

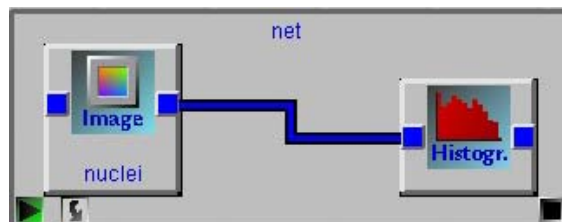
### G. Accessing the Pnode's Property Screen

1. Once the pnode is in the Network Editor, place the mouse pointer over the pnode's property icon and double click the left mouse key.
2. Alternatively you can use the pull down menu and select Properties...



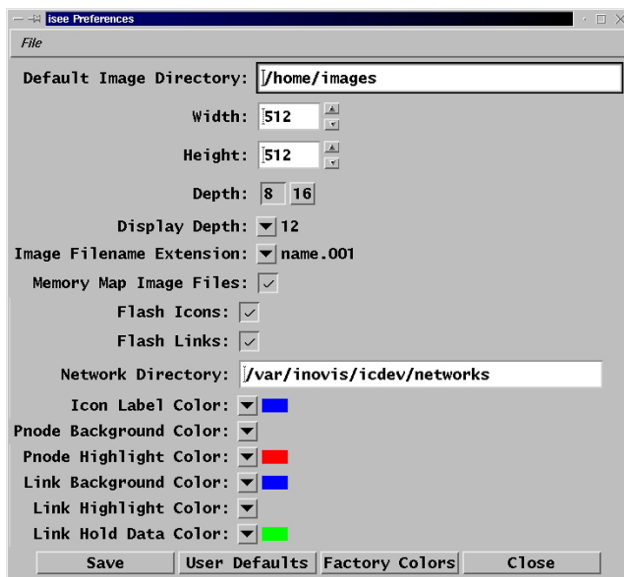
### H. Linking Pnodes to Create Imaging Networks (Visual Scripting)

1. Each pnode has an Input Linkpad and an Output Linkpad. Typically Input Linkpads are connected to Output Linkpads.
2. To link two pnodes together:
  - A. Place the mouse pointer over the output linkpad of the first pnode.
  - B. Hold down the left mouse key.
  - C. Drag the mouse pointer to the Input Linkpad of the second pnode.
  - D. Release the left mouse key.
  - E. A blue line will connect the two pnodes together.



## ISee's User Preference Function

The ISee Preference Function is located in the Props Menu in the ISee Graphical Interface's Main Screen. It allows the user to setup a wide array of properties including:



1. Default Image Directory
2. Default Network Directory
3. Default Image Size