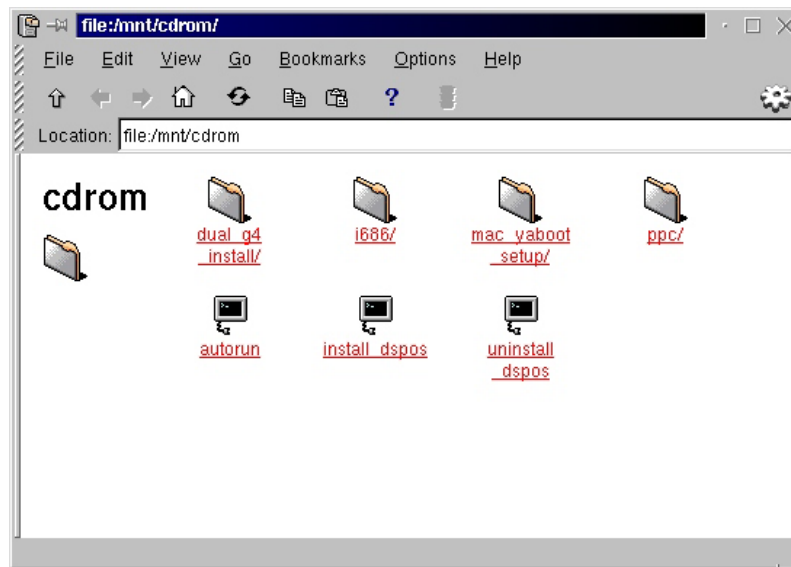




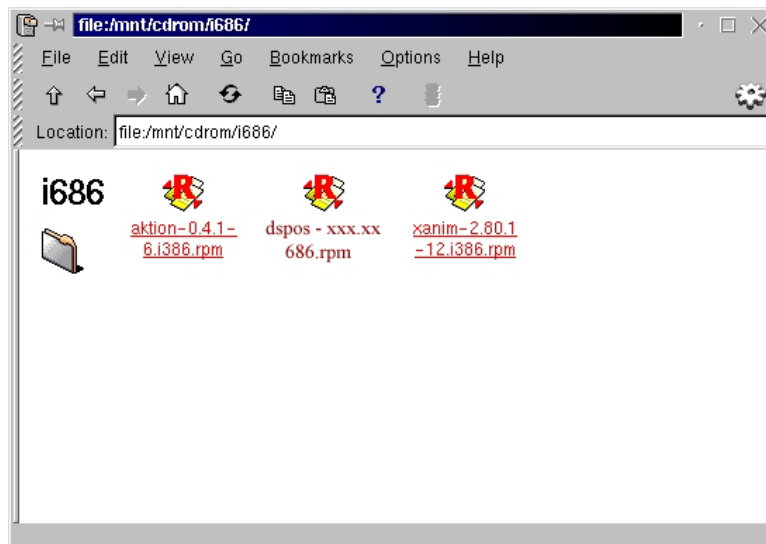
## Installing the ISee Imaging Software on Linux (RedHat 7.1)

A. To Install on a new systems:

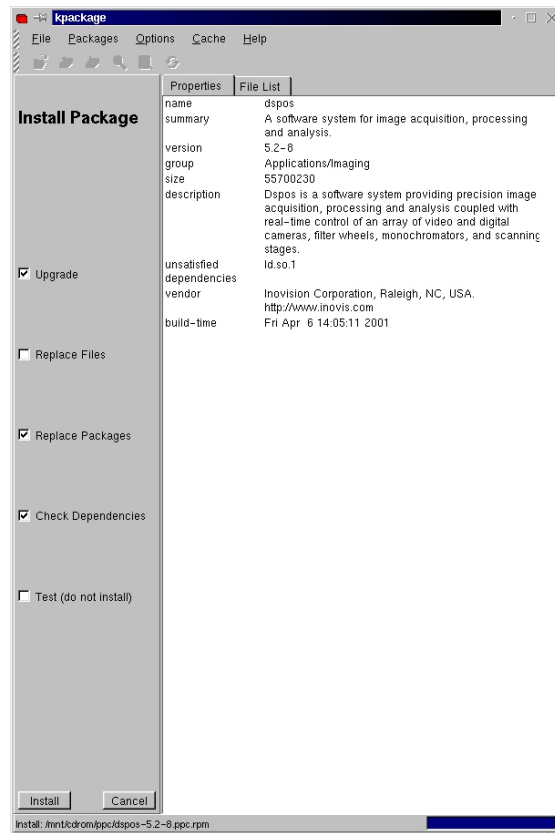
1. Login in as "Root"
2. Insert the ISee Imaging CD in to the CD ROM
3. After a few seconds the File Manager Screen will appear. Open the i686 directory.



4. Double click on the dspos xxx.xx.i686.rpm icon/



5. The kpackage window will appear. Leave the default options checked. Click on "Install".



6. When the installation is complete, either a Netscape or Text Window will appear with the following instructions.
  - a. Call or email ISee Imaging to obtain a password file.
  - b. Telephone: 1-888-879-4733
  - c. [support@iseeimaging.com](mailto:support@iseeimaging.com)
7. Close the kpackage window.

## Installing the ISee Imaging Software on Linux (RedHat 7.1)

### B. Creating / Editing the Password File

1. The password for the ISee Imaging Software is linked to the hardware address of the network card in your computer. If you change the network card, you will need to call ISee Imaging Systems to get a new password.
2. Before you call ISee Imaging Systems for the password, please have the following information available:
  - a. Individual who purchased the software
  - b. Univesity Address
  - c. Telephone Number
  - d. Email Address
  - e. Host ID of the computer

1. Open a Terminal Window



2. At the prompt, type in, "initall -hostid"

3. The computer will prompt back with a setup of numbers and letters that look like: 0x5a69d44a

A screenshot of a terminal window titled 'jdown@lsee: /home/jdown'. The window contains the following text:

```
[jdown@lsee jdown]$  
[jdown@lsee jdown]$ initall -hostid  
0x5a69d44a  
[jdown@lsee jdown]$
```


4. Write this number down.

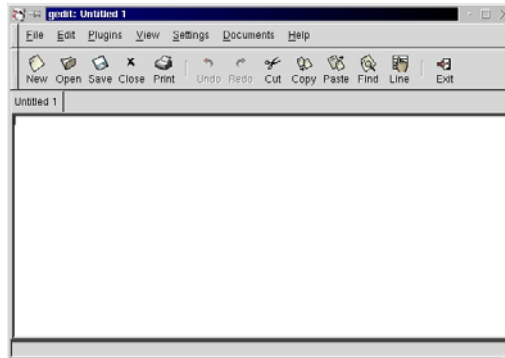
3. After you have received the password information from ISee Imaging, you will need to create the password file.

## Installing the ISee Imaging Software on Linux (RedHat 7.1)

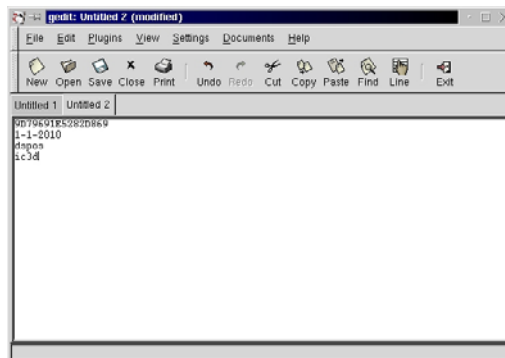
### B. Creating / Editing the Password File

4. To create the password file:

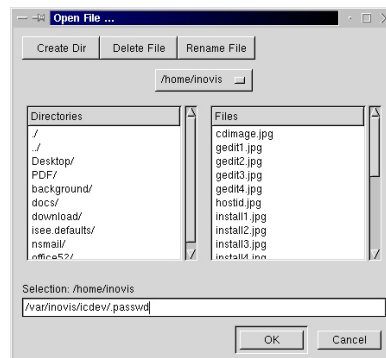
- a. Open a Terminal Window  and log in as super user (su)
- b. From the Terminal Window prompt, type in "gedit" and the text editor appear.



- c. In the blank screen, type in the information provided by ISee Imaging in the exact form taht it was received.



- d. After typing in the information, go the File menu and select Save As... . The Save As screen will appear.



## **Installing the ISee Imaging Software on Linux (RedHat 7.1)**

### **B. Creating / Editing the Password File**

e. Under "Selection" type in the following line:

```
/var/inovis/icdev/.passwd
```

f. Click on "OK" button. Then click on the "Close" button.