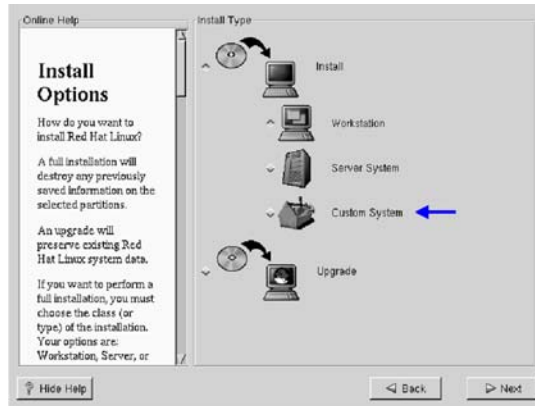


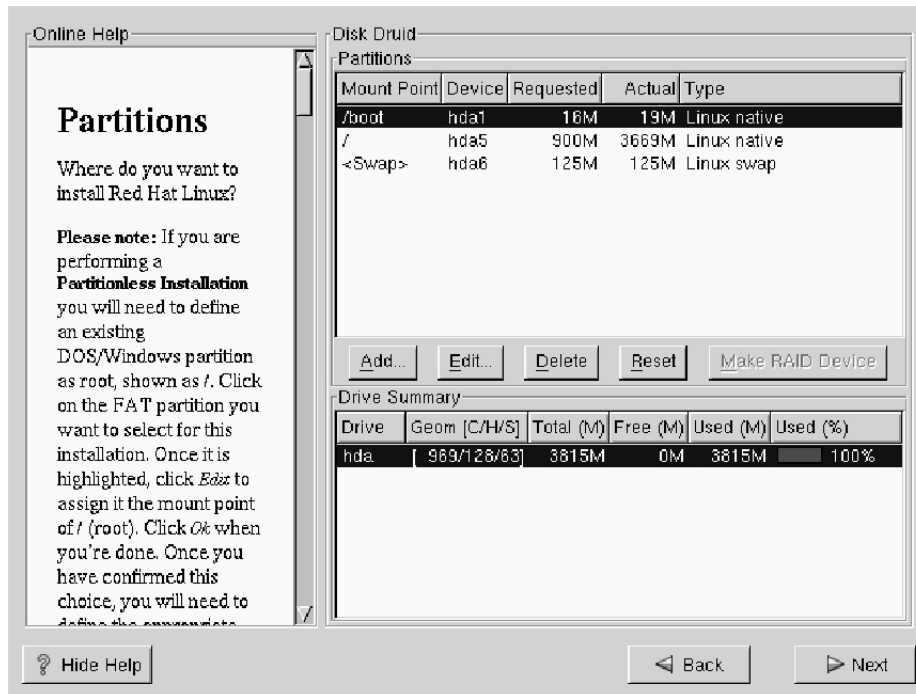


## RedHat Linux 7.1 Operating System Setup

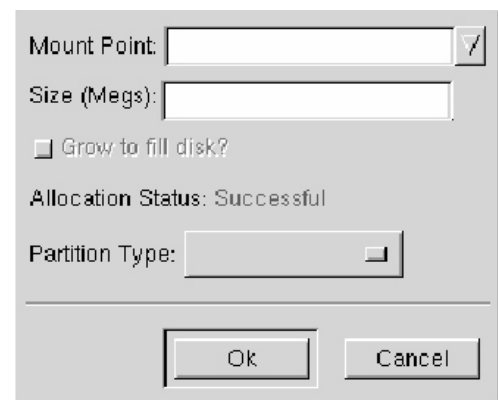
1. Installation Options
  - A. Choose Custom Installation



2. Partitioning Option
  - A. Choose Manual with Disk Druid

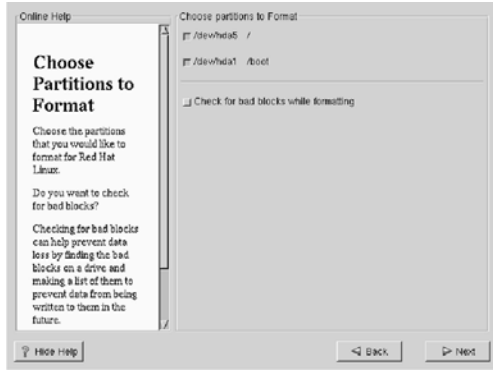


- B. Delete existing partitions
- C. Select " Add " - Root Partition
  1. Select Mount Point - / (root)
  2. Input Size - 4096 (4GB)
  3. Set Partition Type - Linux Native
  4. Set Available Drive - sda
- D. Select " Add " - Linux Swap Partition
  1. Select Mount Point - "leave blank"
  2. Input Size - "same size as RAM memory"
  3. Set Partition Type - Linux Swap
  4. Set Available Drive - sda
- E. Select " Add" - Home Partition
  1. Select Mount Point - /home
  2. Input Size - click on "Use Remain Space"
  3. Set Partition Type - Linux Native
  4. Set Available Drive - sda
- F. If computer has a second hard drive:
  1. Select " Add" -
  2. Mount Point - type in "/data"
  3. Input Size - click on "Use Remain Space"
  4. Set Partition Type - Linux Native
  5. Set Available Drive - sdb



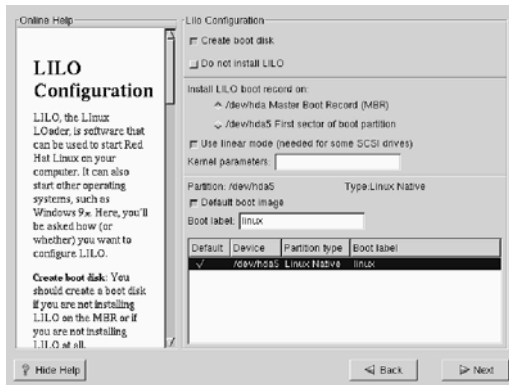
## D. Chose Partitions to Format

1. Select all



## E. LILO Configuration

1. Leave the defaults

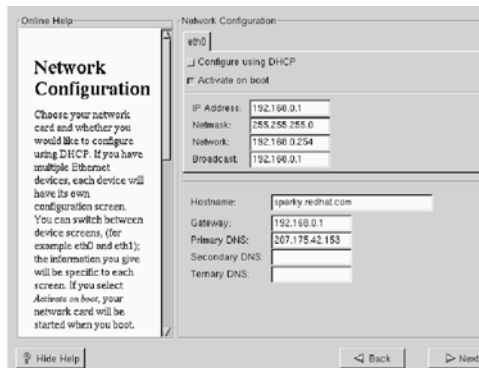


## F. Authentication Configurations

1. Leave as defaults

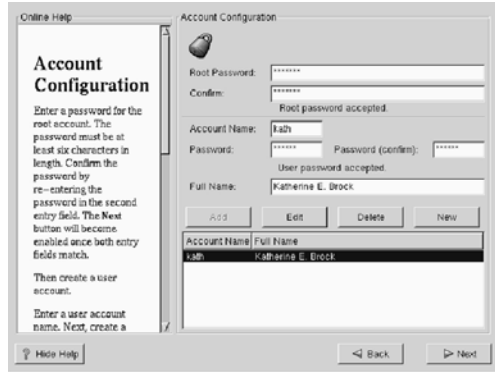
## G. Network Configuration

1. Input network IP address
2. Note - You must input an IP address for ISee to work



## H. User Setup

### 1. Input users and passwords



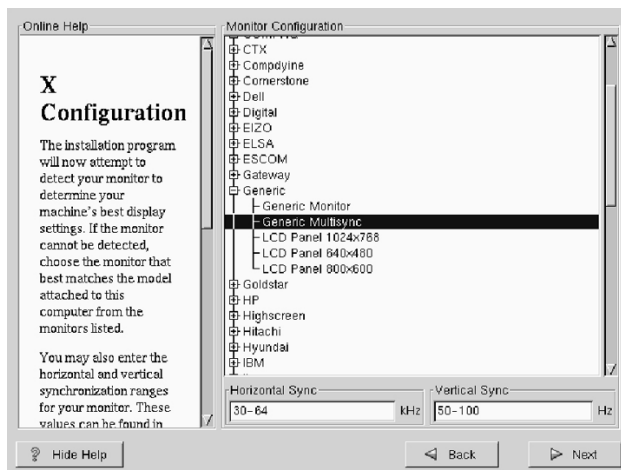
## I. Select Packages

### 1. Go to the bottom of the page and select all the packages. This a about 2GB of space.



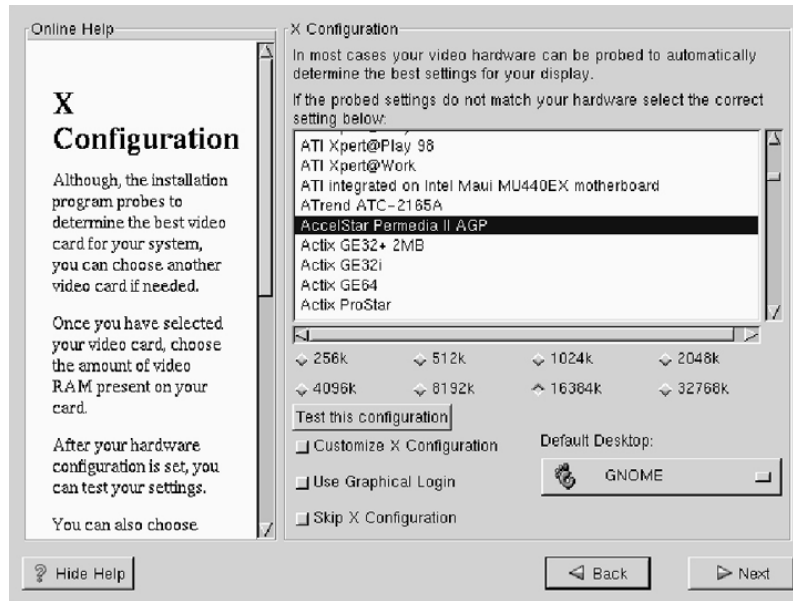
## J. Monitor Setup

1. The software should identify the monitor connected to the computer.
2. If not, it will default to DDC-Probe Monitor - Unprobed Monitor.
3. Set the Horizontal to 31.5-62.4 and the Vertical to 50-100
3. Click on "Next"



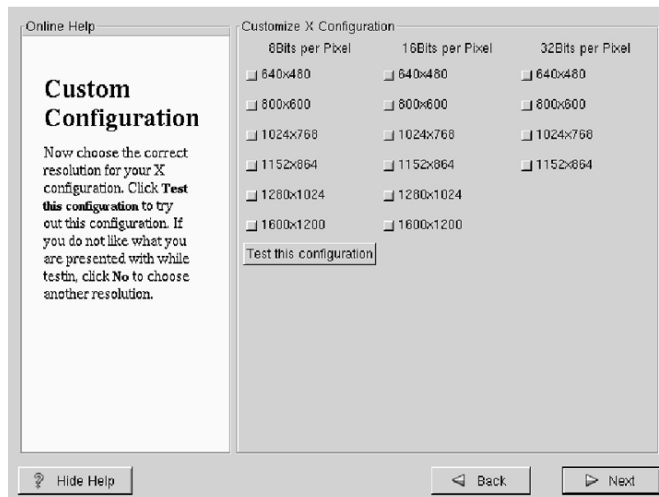
## K. Graphics Card Setup

1. The software should identify the graphics card in the computer or it will default to "Generic Graphics Card"
2. Select the amount of video memory on the graphics card.
3. Click on Customize X Configuration
  - a. If it does not appear, click on "Next" and then click on "Back"
4. Click on Graphical Login
5. Set Default Desktop to "KDE" for the Graphical Interface
6. Click on "Next"

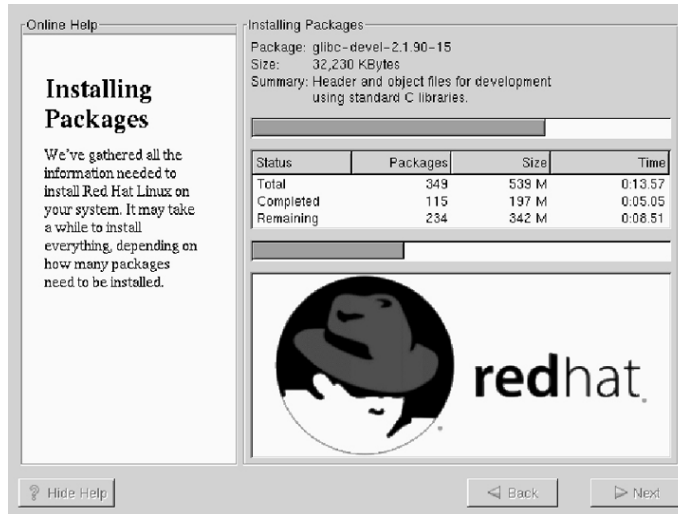


## L. The Manual X Configuration Screen will appear.

1. Setup to 32-bit 1280 x 1024
2. Click on "Next"



M. The system will start to load the selected packages, this will take a while.



N. After the packages have been loaded, you will be asked to create a " Boot Disk"



O. After the Boot Disk has been created, the Installation is complete.

