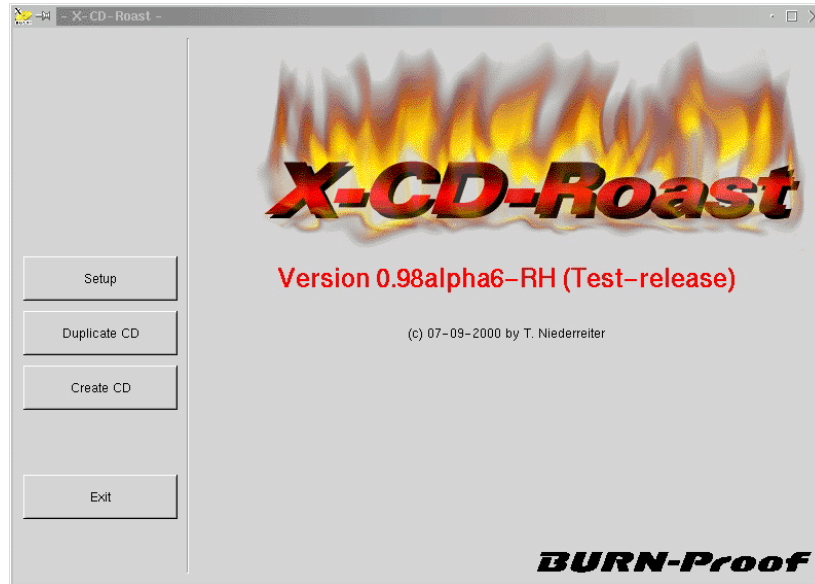


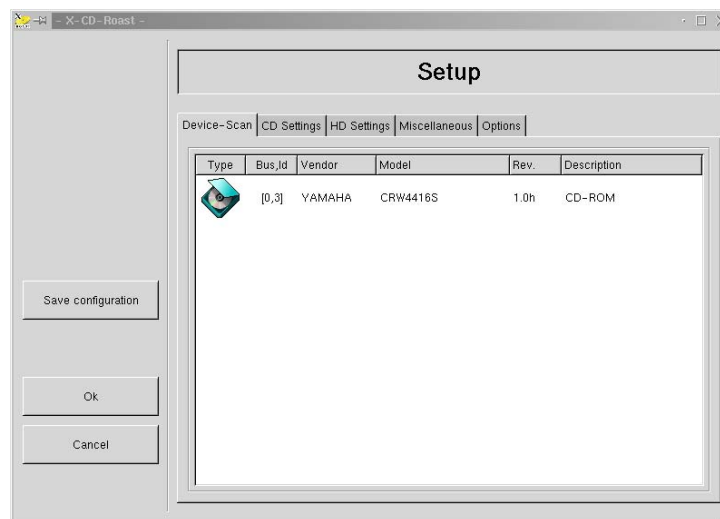


Setting Up the X-CD-Roast Program

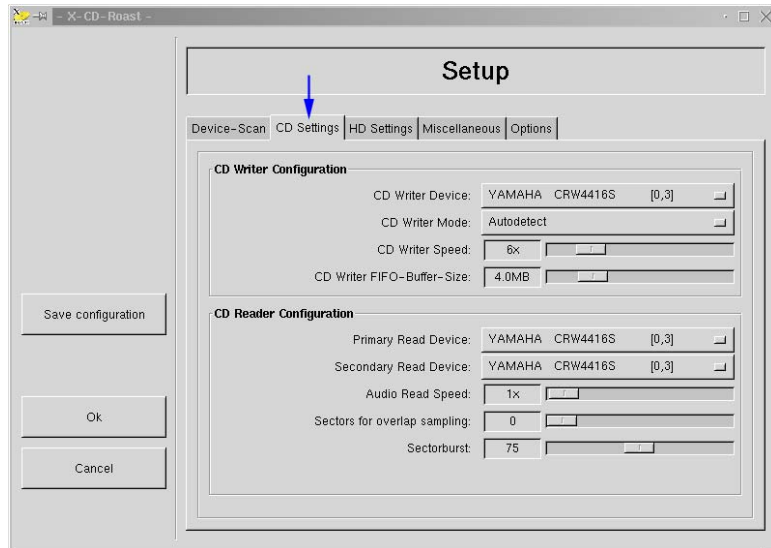
- A. From a terminal screen, become a super user (su)
- B. From the same terminal screen, type in "xcdroast". The following screen will appear. If prompted with warnings, just answer yes to each one.



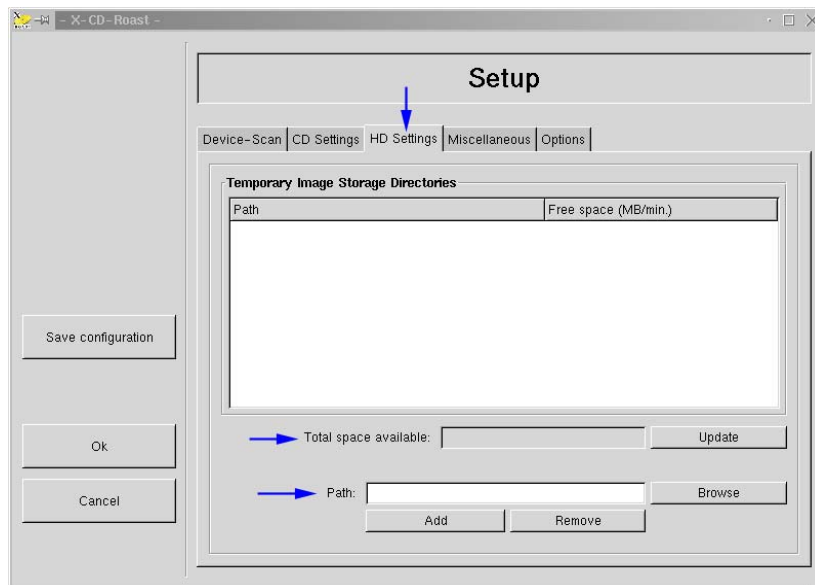
- C. Click on the **Setup** button. The following screen will appear. The icon of the CDRW device will appear in the screen. If not, see Trouble Shooting CDRW Setup sheet.



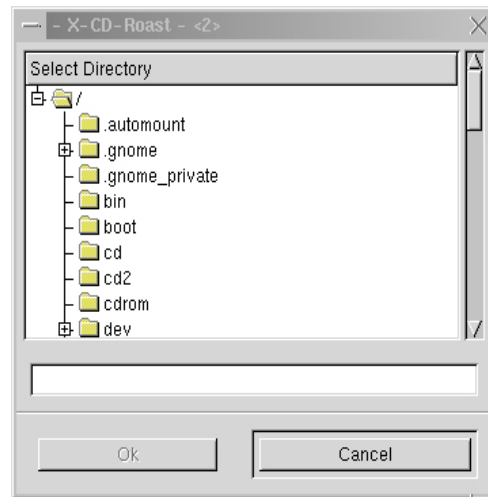
- D. Click on the **CD Setting** button. The following screen will appear. Most of the setting will be automatically updated based on the device selected in the previous screen. The user can change these setting. The setting most often changed will be CD Write Speed that we user can change using the slide bar.



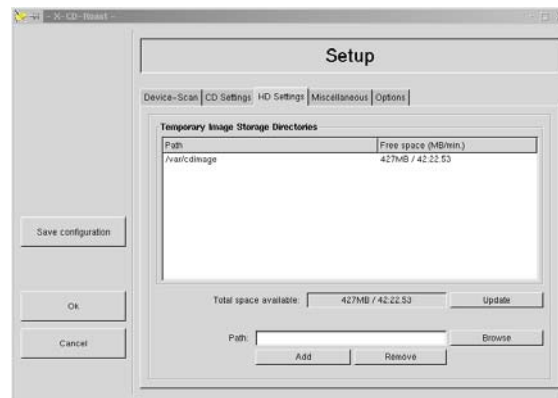
- E. Next clickon the HD Settings button and the following screen will appear. From this screen the user must define the location of the "Temporary Image Storage Directories, where the CD image(s) will reside.



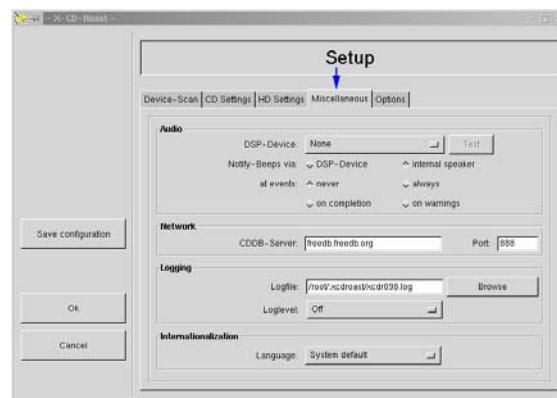
- F. Click on the **Browse** button. The Select Directory screen will appear. Please the mouse pointer over the correct directory and click the left mouse button. The click the **Ok** button at the bottom of the screen



- H. The directory path will appear in the line next to the **Browse** button. The click on the **Add** button. Next click on the **Update** button located at the end of the **Total space available** line. This will update the total space available for storing the CD images.



- I. Next click on the **Miscellaneous** button. Most of these settings can be left to their default values.



- J. Next click on the Option button. These settings can be left to their default values. Click on the Save configuration button to save the settings that you have just entered.

